



**LEADERSHIP**  
CHESTER COUNTY

A PROGRAM OF



United Way  
of Chester County

IN PARTNERSHIP WITH

**WCU**  
WEST CHESTER  
UNIVERSITY



CHESTER COUNTY CHAMBER  
of Business & Industry  
- Chamber of Influence -



# *Alumni Directory* 2018



## 2018 PROGRAM TOPICS

**Chester County 101 Tour** | *Michael Givler, Ed.D.*

**Board Governance** | *Pamela Leland, Ph.D., Executive Director, The Hickman*

**Board Development** | *Jane Mack, Executive Director, Friends Services for the Aging*

**Board Fiduciary Responsibility** | *Donald W. Kramer, Esq., Chair, Nonprofit Law Group, Montgomery, McCracken, Walker & Rhoads, LLP*

**Poverty Simulation** | *Michael Givler, Ed.D.*

**Strategic Discussions, Informed Decisions** | *Elizabeth Guman, Partner, Strategy Arts*

**Fundraising/Philanthropy** | *Roberta A. Healey, MBA, ACFRE, NHA, VP for Philanthropy, Simpson Senior Services, Founding Member, Aurora Philanthropic Consulting*

**Nonprofit Fiscal Management** | *Celeste Barr, CPA, Owner, Clarus Consulting*

**Advocacy** | *Pennsylvania State Representative Duane Milne, Ph.D.*

**Social Entrepreneurship** | *Matthew Shea, Ph.D., Associate Professor, Management Department, West Chester University*

**Strategic Planning** | *Mark W. Davis, Ph.D., Assistant Professor, Department of Public Policy & Administration, West Chester University*

**Leadership for Sustainability** | *Stephen Wray, VP & Director, Econsult Solutions*

**Dialogues in Diversity & Inclusion** | *Michael L. Curry, CISA, CBCP, Principal, Business Contingency Services, Vanguard Group, Inc.*

**Intentional Communications** | *Robert Madonna, President & CEO, Surrey Services for Seniors*

**Nonprofit Perspectives** | *Nonprofit Executives & Board Representatives*

**Collaborating for Greater Impact** | *Jason D. Alexander, Principal, Capacity for Change, LLC*

**Ethics in Nonprofit Leadership** | *Matt Pierlott, Ph.D., Chair, Department of Philosophy, Assistant Director of the Honors College, West Chester University*

## 2018 NONPROFIT PROJECT

### PROJECT HOST:



**La Comunidad Hispana**  
[www.lacomunidadhispana.org](http://www.lacomunidadhispana.org)

La Comunidad Hispana is a Federally Qualified Health Care Center that has served the southern Chester County community for more than 40 years as a multi-service, bilingual nonprofit that changes lives through Integrated Person-Centered Care: health care, social assistance, and education and workforce development.

### PROJECT CHALLENGE:

LCH actively seeks out new ideas, venues, and relationships to implement innovative approaches. LCH Executive Director, Alisa Jones and Board President, Ronan Gannon (a 2014 LCC graduate) presented two skills-, knowledge- and capacity-building projects to further LCC participants' understanding of a board's role in organizational development and sustainability.

Leadership Chester County students applied diverse professional skills and best practices learned in LCC to further LCH's mission, learning its operations, culture and community. They collaborated to produce a substantial set of tools and recommendations to inform LCH's strategic planning:

- Research into the socio-economic factors specific to the Oxford community where LCH recently opened a satellite location, addressing LCH brand awareness and the challenges and opportunities for developing services in this area
- Development of methods to educate current LCH board members and orient new ones, enhancing organizational development, creating a renewable source of board members, and sustaining a board culture of philanthropy





## INTRODUCING THE *Class of 2018*



### Charles "Ebbie" Alfree, III

Director of Advancement | **THE HICKMAN**

Sponsor: **THE HICKMAN**

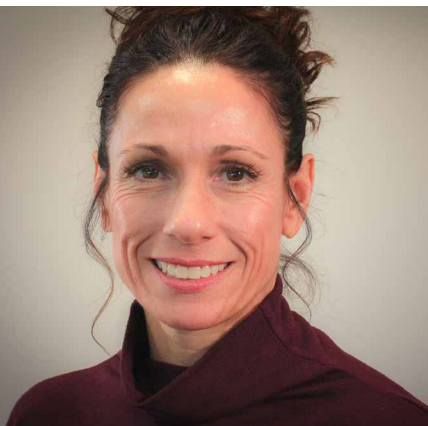
**EXPERTISE** Development/Fundraising/Marketing

**VOLUNTEERING** Board, City Theater Company, Wilmington

**ATTRIBUTES** Understanding of the regional and national nonprofit sector

**SERVICE INTERESTS** Health, arts

*"Leadership Chester County provided me a better understanding of the Chester County nonprofit sector. What I have learned has and will continue to help me grow as both a board member and as an employee of a nonprofit organization."*



### Laura Aloisio

Business Manager | **DAVE'S AUTOMOTIVE REPAIR ENT., LLC**

Sponsor: **ROTARY CLUB OF WEST CHESTER**

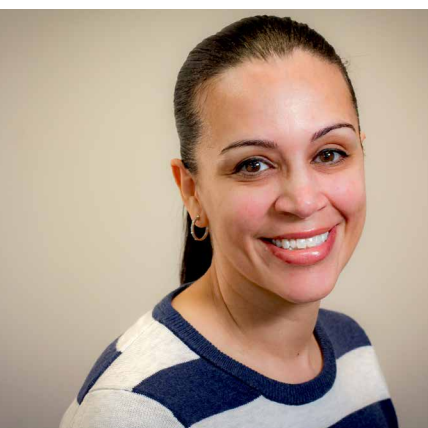
**EXPERTISE** Accounting, customer service, sales, human resources, management

**VOLUNTEERING** Rotary Club of West Chester Board, West Chester Area YMCA, West Chester Area Senior Center, Greater West Chester Chamber of Commerce

**ATTRIBUTES** Passion for the cause, strong community connections; enjoys working on fundraising and events

**SERVICE INTERESTS** Homeless shelter, helping children in need

*"LCC has provided me with an in-depth view of serving as a board member. Every aspect of being a board member is covered by the amazing speakers who share their knowledge and personal experiences each month. Anyone considering joining a board should definitely go through this program."*



### Cricely Augustin

Manager, Support | **CITADEL FEDERAL CREDIT UNION**

Sponsor: **CITADEL FEDERAL CREDIT UNION**

**EXPERTISE** Banking and customer service

**ATTRIBUTES** Experienced in group dynamics and development

**SERVICE INTERESTS** Women/children and homelessness

*"The Leadership Chester County program helped me to establish a clear and defined set of skills that I will use to be of service in my community. I was happy to share the experience with an amazing group of leaders!"*



## Edita Bailey

Market Manager

**CITADEL FEDERAL CREDIT UNION**

Sponsor: **CITADEL FEDERAL CREDIT UNION**

**EXPERTISE** Corporate human resources, retail leadership, banking products

**VOLUNTEERING** Board, Phoenixville Area Community Services

**ATTRIBUTES** People development – performance management, goal setting and achievement

**SERVICE INTERESTS** Health

*“This program has given me an in-depth understanding about the nonprofit world and my role as a board member. I have met so many wonderful leaders throughout this program and broadened my professional horizons.”*



## Michael A. Battista

Sr. Manager, HR Administration

**COMMUNICATIONS TEST DESIGN, INC.**

Sponsor: **COMMUNICATIONS TEST DESIGN, INC.**

**EXPERTISE** Human resources

**ATTRIBUTES** Strategic planning for human resources

**SERVICE INTERESTS** Financial independence, health

*“Leadership Chester County has given me a renewed perspective on the issues surrounding my community, and has enabled me to go forward and better serve the people of Chester County.”*



## Alex J. Baumler

Attorney

**LAMB MCERLANE, PC**

Sponsor: **LAMB MCERLANE, PC**

**EXPERTISE** Municipal, land use and finance

**VOLUNTEERING** Pro bono work

**ATTRIBUTES** Vast legal knowledge regarding structure and operation of a nonprofit, financial management and planning experience, a wide breadth of community connections and a passion for public service

**SERVICE INTERESTS** Education, environmental protection and historical preservation

*“Leadership Chester County delivers an outstanding opportunity to train and interact with a diverse segment of local leaders. The program also provides direct access and opportunity to explore and interact with nonprofit leaders at the forefront of today’s industry as well as the many wonderful nonprofit organizations throughout Chester County.”*

*"Leadership Chester County opened my eyes to not only the needs of the local communities but the headwinds that nonprofit organizations are faced with trying to support those communities."*

## Amanda Criswell

Package Division Manager | **UPS**

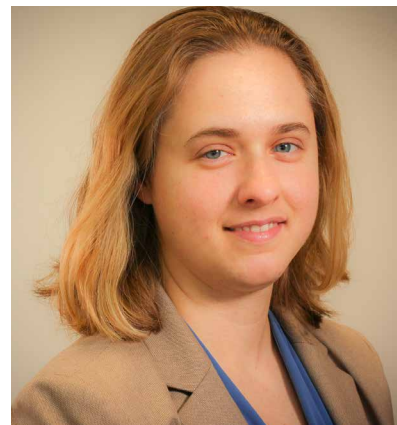
Sponsor: **UPS**

**EXPERTISE** Management

**VOLUNTEERING** United Way of Chester County

**ATTRIBUTES** Personal commitment to improving the lives of others; experience in project deployment; decision making capabilities; honesty and integrity

**SERVICE INTERESTS** Financial independence



*"LCC provided me with valuable education on nonprofit governance and community involvement. I gained a greater insight into the needs and resources available in Chester County. Being a part of the program was an incredible experience. I feel better prepared and excited to serve our community in the future because of this excellent learning opportunity."*

## Marianna D. Cutler

Director of Volunteer & Senior Services

**BRANDYWINE HOSPITAL TOWER HEALTH**

Sponsor: **BRANDYWINE HOSPITAL TOWER HEALTH**

**EXPERTISE** Leadership with community seniors and youth; hospital and healthcare industry experience; event planning, customer service, project management and strategic planning

**VOLUNTEERING** Habitat for Humanity Philadelphia Ride for Homes, Gearing Up and Strawberry Festival Committee

**ATTRIBUTES** Community connections

**SERVICE INTERESTS** Education; youth mentoring



*"It is a crash course on becoming an educated and effective board member."*

## Kim DeHaven

Self-sponsored

**EXPERTISE** Sales and marketing

**VOLUNTEERING** Chester County Community Foundation Grants Committee

**ATTRIBUTES** Focused individual who likes to help motivate others in working towards a common goal

**SERVICE INTERESTS** Education and equestrian therapy







## Joseph J. DiPierro

Vice President of Commercial Accounts

**BRANDYWINE VALLEY HEATING & AIR CONDITIONING**

Sponsor: **BRANDYWINE VALLEY HEATING & AIR CONDITIONING**

**EXPERTISE** Construction, negotiations

**VOLUNTEERING** Education and sports

**ATTRIBUTES** Conscientious and careful approach with practical knowledge

**SERVICE INTERESTS** Education

*"The class was detailed and thorough. I am currently on two boards and the classes taught me numerous skills that will help these boards succeed."*



## Jack Ellis

Vice President, Market Manager | **FIRST RESOURCE BANK**

Sponsor: **FIRST RESOURCE BANK**

**EXPERTISE** Financial, business development, sales, relationship management, team building and process improvement

**VOLUNTEERING** Rotary Club of West Chester, West Chester Chamber Ambassador; First Resource Bank Millennial Advisory Board, West Chester Area Education Foundation Board

**ATTRIBUTES** Community and business connections, a team-centric mindset and a positive attitude

**SERVICE INTERESTS** Education; financial independence; child welfare; domestic violence prevention/assistance

*"LCC has exposed me to so many essential aspects of nonprofit board membership. Through a number of eye-opening experiences and engaging speakers, LCC and my classmates have given me the tools and knowledge to be an effective board member."*



## Amanda Embry

Senior Web Designer | **BENTLEY SYSTEMS, INC.**

Sponsor: **BENTLEY SYSTEMS, INC.**

**EXPERTISE** Marketing and design, including website and graphic design and social media marketing

**VOLUNTEERING** Relay for Life Central Chester County, United Way of Chester County through Bentley, CMMD and Philadelphia Horticultural Society Flower Show volunteer

**ATTRIBUTES** Coordinating and leading activities, recruitment, and fundraising, applying professional marketing and design skills for events

**SERVICE INTERESTS** Education; health; art

*"Leadership Chester County was educational, informative and a great opportunity to connect with other like-minded individuals from different backgrounds sharing a similar goal of bettering the community."*

*"LCC was an eye-opening experience and crash course into the nonprofit sector. It was a valuable educational, practical and networking experience that will serve me well personally and professionally for years to come."*

## Elizabeth G. Hodgson, Esq.

Attorney | **FOX ROTHSCHILD LLP**

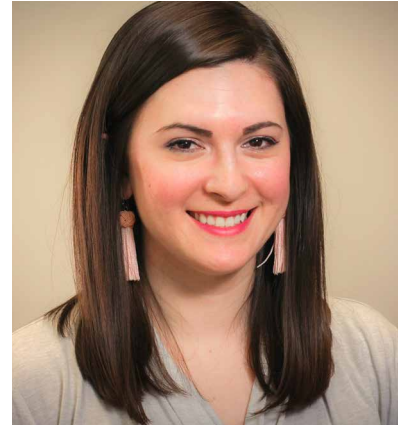
Sponsor: **FOX ROTHSCHILD LLP**

**EXPERTISE** Commercial litigation, business counseling

**VOLUNTEERING** Chester County Fund for Women & Girls and Home of the Sparrow

**ATTRIBUTES** Excellent analytical and communication skills with experience in high level teams

**SERVICE INTERESTS** Education, financial independence



*"The LCC program provided an excellent overview of why nonprofits exist and how they function. The program provided valuable information on a variety of important topics that impact the operational and strategic plans of nonprofits."*

## Helen R. Kaplonski

Director of Center Advancement | **CHILD GUIDANCE RESOURCE CENTERS**

Sponsor: **LCC SCHOLARSHIP AND CGRC**

**EXPERTISE** Grant research, composition and administration; clinical proposal research and composition; finance and banking

**VOLUNTEERING** Rotary Club of Haverford Township, Pancreatic Cancer Action Network

**ATTRIBUTES** Understanding of roles and responsibilities of board service; experience with nonprofit operations including leadership, finance, regulation and fundraising; prior corporate experience

**SERVICE INTERESTS** Health



## Kristen A. Kutz

Financial Center Manager | **FULTON BANK, N.A.**

Sponsor: **FULTON BANK, N.A.**

**EXPERTISE** Banking

**VOLUNTEERING** March of Dimes Nomination Committee, Communications and Young Business Leaders Committee for Southern Chester County Chamber of Commerce

**ATTRIBUTES** Experience leading teams and in project management; writing/communications and event planning

**SERVICE INTERESTS** Health; animal and environmental causes





## Maureen A. Linahan

Assistant Director of Human Resources

**CHESTER COUNTY INTERMEDIATE UNIT**

Sponsor: **CHESTER COUNTY INTERMEDIATE UNIT**

**EXPERTISE** Human Resources-SPHR, SHRM-SCP with experience in the field of education

**VOLUNTEERING** Education, youth organizations

**ATTRIBUTES** Experience in leading cross-functional teams to implement new strategies and proactively support change; willing to learn and work collaboratively across disciplines

**SERVICE INTERESTS** Education

*“Leadership Chester County is a comprehensive program which has provided a well-rounded view of working on a nonprofit board. Having the ability to work collaboratively on a project which benefits a current nonprofit has been an invaluable experience, showcasing the commitment and skills required to be a successful board member in the future.”*



## Rachel E. Lusk

Attorney | **LAMB MCERLANE, PC**

Sponsor: **LAMB MCERLANE, PC**

**EXPERTISE** State and federal civil and commercial litigation and health care law

**VOLUNTEERING** Board of Southeastern PA Autism Resource Center (SPARC)

**ATTRIBUTES** Strong community connections and experienced in facilitating lasting business relationships

**SERVICE INTERESTS** Education and health

*“LCC has strengthened my understanding of the unique challenges and strategies that impact nonprofits in Chester County and provided me with the tools and knowledge to be an effective board member and leader for those nonprofits.”*



## Sandra McCabe

Director of Finance

**CHESTER COUNTY INTERMEDIATE UNIT**

Sponsor: **CHESTER COUNTY INTERMEDIATE UNIT**

**EXPERTISE** Certified Public Accountant; administrator for public, private and education organizations

**ATTRIBUTES** Experience in all areas of financial reporting for both public and private organizations; a desire to help people whether it be service for a food bank or improving the quality of life for seniors

**SERVICE INTERESTS** Education, financial stability, health, social services for the elderly, food bank services

*“The Leadership Chester County experience opened my eyes to the incredible work performed by the various nonprofits in Chester County and the challenges these organizations face. This course, the discussions, the material and the resources provided will be invaluable in my future endeavors.”*



*"Great experience with LCC. So much valuable to learn about not for profit best practices. I will take these skills (and relationships) with me as I volunteer throughout Chester County."*

## Pia McCann

Manager | **MINOAN MANAGEMENT, LLC**

Sponsor: **LA COMUNIDAD HISPANA**

**EXPERTISE** Real estate; spatial analysis; mapping

**VOLUNTEERING** Board, La Comunidad Hispana; Development Committee, Brandywine River Museum of Art

**ATTRIBUTES** Energy, enthusiasm, understanding of the local business community, experience in management and technology as well as strategic planning

**SERVICE INTERESTS** Financial independence; health



*"Leadership Chester County has opened my eyes to both the needs and the strengths of the communities in Chester County. The course provided a series of very knowledgeable, dynamic presenters who offered a range of tools for effectively serving on a nonprofit board."*

## Kevin C. Myhre, Esq.

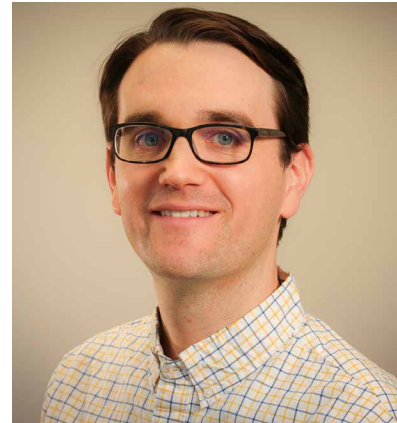
Attorney | **BARLEY SNYDER**

Sponsor: **BARLEY SNYDER**

**EXPERTISE** Intellectual Property Law

**ATTRIBUTES** Detail-oriented, analytical perspective with roots in West Chester

**SERVICE INTERESTS** Education



## Lori A. Nonnemaker

President and Founder | **BUCK CANCER FOUNDATION**

Self-Sponsored

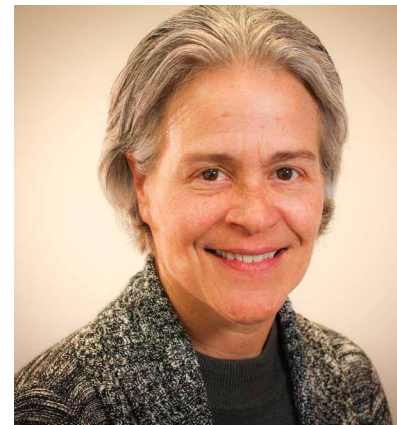
**EXPERTISE** Accounting

**VOLUNTEERING** Buck Cancer Foundation

**ATTRIBUTES** Team player, organized, goal-oriented and enthusiastic with experience in project management

**SERVICE INTERESTS** Health

*"It broadened my understanding of the nonprofit world and what it means to be an effective board member so we can take Buck to the next level!"*





## Tanya M. Papahristos

Director, Human Resources (Independent)

Sponsor: **ACCESSLEX INSTITUTE**

**EXPERTISE** Human resources, total rewards, full cycle recruiting with specialization in HRIS

**ATTRIBUTES** Experience with mergers and acquisitions, audit and reorganizations

**SERVICE INTERESTS** Education and health

*"LCC has given me a first hand experience into nonprofit boards, allowing me to grow professionally and to share with others my experiences and development on a board."*

*"It's kind of fun to do the impossible." -Walt Disney*



## John V. Rafferty

Associate Attorney | **GAWTHROP GREENWOOD, P.C.**

Sponsor: **GAWTHROP GREENWOOD, P.C.**

**EXPERTISE** Contracts, litigation, disputes; video production; web development

**VOLUNTEERING** Boards of Volunteer English Program, The Barn at Springbrook Farms, p.h.balanced films, and Advisory Council Member, The Institute to Address Commercial Sexual Exploitation at Villanova Law School

**ATTRIBUTES** Led tactical teams in battlefield simulations in active conflict zones; program compliance through audits; client-centered results through litigation skills and creative advocacy

**SERVICE INTERESTS** Welcoming immigrants, access to legal services

*"Leadership Chester County connected me to people and organizations that are strengthening my community."*



## Christopher Reed

VP, Private Banking | **UNIVEST WEALTH MANAGEMENT**

Sponsor: **UNIVEST WEALTH MANAGEMENT**

**EXPERTISE** Financial, banking, lending

**ATTRIBUTES** Willingness to spend time helping others in a time of need and hopefully guide them onto a better path; sharing life experiences and what I have learned and gained from them

**SERVICE INTERESTS** Health and financial independence

*"I believe the service that LCC provides to the community is invaluable. The education provided to individuals in the program allows them to become more engaged and to lead in the right way. This strengthens the local nonprofit organizations they serve and ultimately builds a better community."*



## Allison Snavelly

Director of Development | **CHESTER COUNTY HISTORICAL SOCIETY**

Sponsor: **LCC SCHOLARSHIP AND VISTA.TODAY**

**EXPERTISE** Sales, marketing, events, fundraising

**VOLUNTEERING** Rotary

**ATTRIBUTES** Business and personal connections with sales training and experience

**SERVICE INTERESTS** Organizations supporting women

*"I found value in the expertise of the guest speakers and benefited from their specific areas of knowledge. I come from the perspective of nonprofit business development and found the topics covered important and informative."*

*“Leadership Chester County reinforced so many truths about the essential human ideal of community. The course gives students the knowledge to serve as a capable board member for the nonprofit of their choice.”*

## Isaac B. Thomas

*Executive Producer* | **FRANCIS HALL INSURANCE SERVICES**

*Sponsor:* **FRANCIS HALL INSURANCE SERVICES**

**EXPERTISE** Insurance and Risk Management

**VOLUNTEERING** Board of Exton Regional Chamber of Commerce; Friends of Green Field Park

**ATTRIBUTES** Background in marketing, degree in professional speech and communication

**SERVICE INTERESTS** Environmental Stewardship



*“I truly believe that anyone serving on a nonprofit board should be required to go through this leadership class. The breadth of knowledge we received from experts in governance and best practices is extensive. This would allow so many more nonprofit board the ability to make educated, smart and hard decisions that need to be made to strengthen them. I’ve been involved with nonprofits for over 30 years and still learned so much; and the connections are invaluable.”*

## Jill Whitcomb

*Vice President for Development and Communications*

**BRANDYWINE HEALTH FOUNDATION**

*Sponsor:* **LCC SCHOLARSHIP & BRANDYWINE HEALTH FOUNDATION**

**EXPERTISE** Nonprofit development, fundraising, strategic planning, creating successful collaborations

**VOLUNTEERING** Boards of Coatesville Youth Initiative and Western Chester County Chamber of Commerce

**ATTRIBUTES** Extensive nonprofit experience, professionally and as a volunteer leader; new-found LCC skills; personal passion for nonprofits; numerous community connections

**SERVICE INTERESTS** Health, advocacy, youth, environment



*“The Leadership Chester County program completely opened my eyes to the needs of so many in Chester County. This course has provided me with an entirely new perspective and a host of new tools that I hope to use to help impact someone else’s life in some positive way.”*

## Greg Zeller

*Product Consultant* | **BENTLEY SYSTEMS, INC.**

*Sponsor:* **BENTLEY SYSTEMS, INC.**

**EXPERTISE** Sales and marketing, public speaking, small business ownership and management

**ATTRIBUTES** Chester County native with a true passion for the area, strong leadership and communications skills with diverse groups

**SERVICE INTERESTS** Education, health, public safety, child welfare, feeding those in need





## **THANK YOU 2018 SPONSORS:**

*AccessLex Institute  
Barley Snyder, LLP  
Bentley Systems, Inc.  
Brandywine Health Foundation  
Brandywine Hospital-Tower Health  
Brandywine Valley Heating & Air Conditioning  
Chester County Intermediate Unit  
Child Guidance Resource Centers  
Citadel Federal Credit Union  
Communications Test Design, Inc.  
First Resource Bank  
Fox Rothschild LLP  
Francis Hall Insurance Services  
Fulton Bank, N.A.  
Gawthrop Greenwood, PC  
The Hickman  
La Comunidad Hispana  
Lamb McErlane, PC  
Rotary Club of West Chester  
UPS Foundation, Inc.  
Univest Bank & Trust  
VISTA.Today*

## **WITH IN-KIND SUPPORT FROM**

*Chester County Chamber of  
Business & Industry  
Chester County Department of  
Community Development  
Krapf Bus Companies  
Laura A. Mikowychok Design & Media, LLC  
Legal Internet Solutions, Inc.  
St. Paul's Baptist Church  
Strategy Arts, LLC  
United Way of Chester County  
West Chester University  
And many nonprofit hosts and presenters*

## **2018 ADVISORY BOARD**

### **CHAIRMAN**

**Randall Schauer, Esq.**  
Partner  
Fox Rothschild, LLP

**R. Lorraine Bernotsky, Ph.D.**  
Executive Vice President and Provost  
West Chester University

**Neil Bryant**  
VP, Sales Development US & Canada  
Carestream Health  
United Way of Chester County  
Board of Directors

**Guy Ciarrocchi, Esq.**  
President and CEO  
Chester County Chamber of  
Business & Industry

**Christopher Fiorentino, Ph.D.**  
President  
West Chester University

**Claudia Hellebush**  
President and CEO  
United Way of Chester County

## **PROGRAM DIRECTOR**

**Mary Anne Feeley**  
Manager, Community Engagement  
United Way of Chester County  
(610) 429-9400  
[mfeeley@uwchestercounty.org](mailto:mfeeley@uwchestercounty.org)